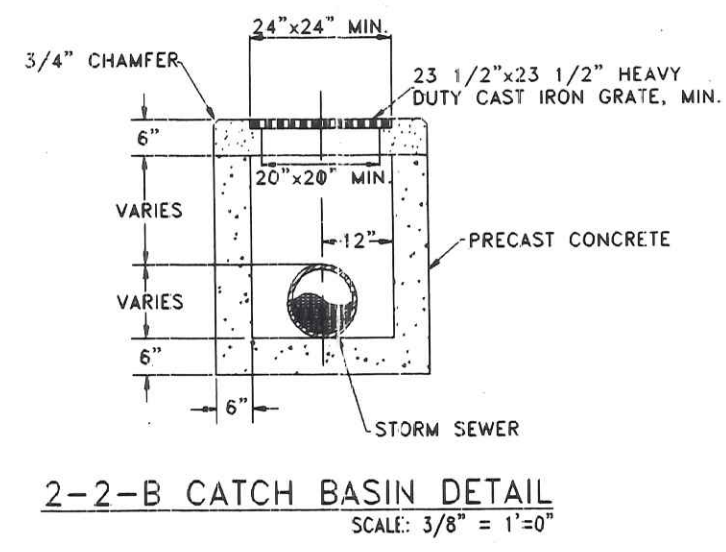
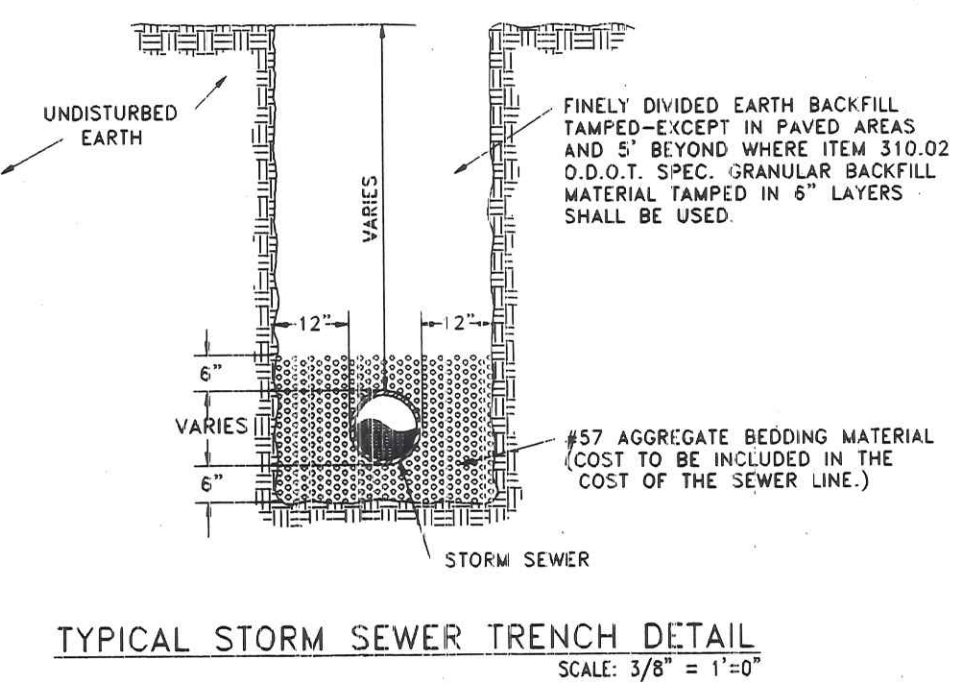
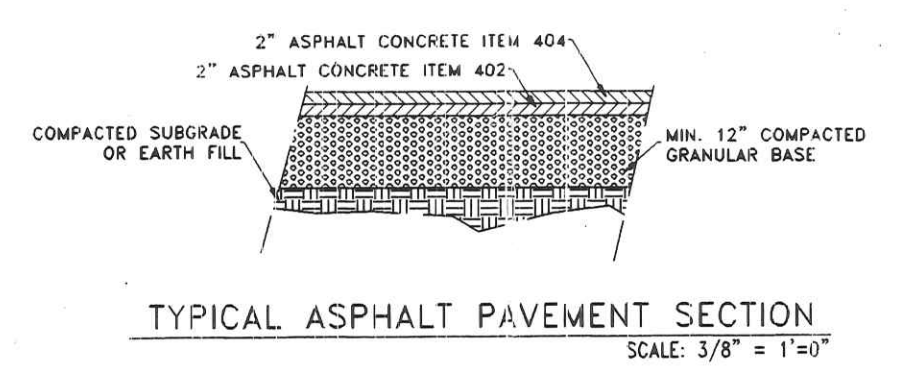
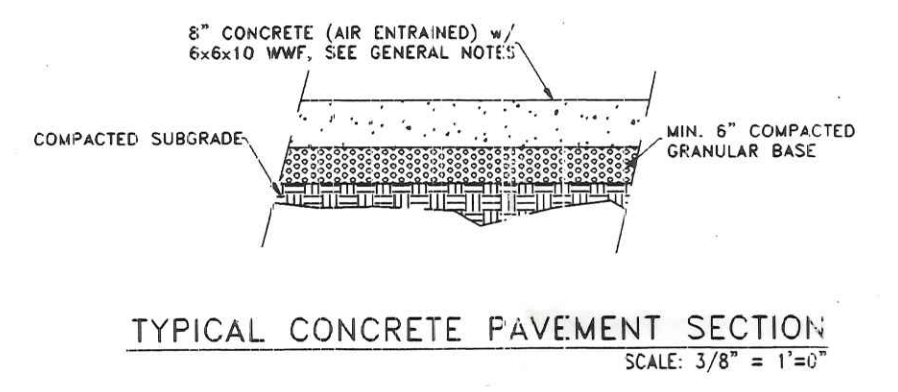


PARCELS A & C  
PART OF THE NE 1/4, SECTION 7,  
T-5-N, R-7-E, LIBERTY TOWNSHIP,  
HENRY COUNTY, CITY OF NAPOLEON  
STATE OF OHIO

**BUILDING DATA:**  
 PROPOSED BUILDING, PARCEL "C" ~ DRY STORAGE WAREHOUSE  
 USE GROUP: "S-1" MODERATE HAZARDOUS STORAGE  
 CONSTRUCTION TYPE: 2-C  
 AREA: ALLOWABLE: 8,400 SQ. FT. (Table 503 2-C Const.)  
 UNLIMITED PER SEC. 507.0 OBCC.  
 PROPOSED: 86,750 SQ. FT.  
 HEIGHT: ALLOWABLE: 85' - 1 STORY (UNLIMITED AREA BUILDINGS)  
 PROPOSED: 43' - 1 STORY  
 MAXIMUM OCCUPANCY LOAD: 15 PERSONS (Estimated Actual)  
 MAXIMUM EXIT ACCESS TRAVEL DISTANCE: 250' ALLOWABLE  
 200' ± PROPOSED  
 EXISTING BUILDING, PARCEL "A" ~ DRY STORAGE WAREHOUSE  
 USE GROUP: "S-1" MODERATE HAZARDOUS STORAGE  
 CONSTRUCTION TYPE: 2-C  
 AREA: ALLOWABLE: 8,400 SQ. FT. (Table 503 2-C Const.)  
 UNLIMITED PER SEC. 507.0 OBCC.  
 EXISTING: 125,800 SQ. FT.  
 HEIGHT: ALLOWABLE: 85' - 1 STORY (UNLIMITED AREA BUILDINGS)  
 EXISTING: 35' - 1 STORY  
 MAXIMUM OCCUPANCY LOAD: 15 PERSONS (Estimated Actual)  
 MAXIMUM EXIT ACCESS TRAVEL DISTANCE: 250' ALLOWABLE  
 200' ± PROPOSED

2 WORKING DAYS  
 BEFORE YOU DIG  
 CALL TOLL FREE 800-362-2764  
 OHIO UTILITIES PROTECTION SERVICE



DESIGN LOADS: FLOOR: MIN. 250 psf. LIVE plus DEAD LOAD  
 ROOF: 20 psf. LIVE LOAD plus DEAD LOAD  
 25 psf. GROUND SNOW LOAD  
 WIND: EXPOSURE "C", 80 mph wind speed,  
 SEISMIC DATA: ZONE 1  
 Av: 0.077  
 Ag: 0.10  
 HAZARD GROUP: I  
 PERFORMANCE CATEGORY: B  
 SOIL PROFILE TYPE: S4  
 BASIC STRUCTURAL SYSTEM: 3 MRFS  
 R: 4.5  
 Cd: 4.0  
 ANALYSIS PROCEDURE: ELF, (1612.4)  
 SOIL BEARING CAPACITY: 2,500 p.s.f. (Class 4 Soils)

**GENERAL NOTES:**  
 1) PARCELS "A" & "C" HAVE THE RIGHT OF INGRESS AND EGRESS OVER THE ENTIRE AREA OF PARCEL "B" (1.447 AC.); REFERENCE EASEMENTS GRANTED IN DEEDS RECORDED IN THE HENRY RECORDERS OFFICE AT OFFICIAL RECORD VOLUME 7, PAGES 748 & 751.  
 2) ALL WORK AND MATERIAL SHALL BE IN ACCORDANCE WITH THE REQUIREMENTS OF THE CITY OF NAPOLEON.

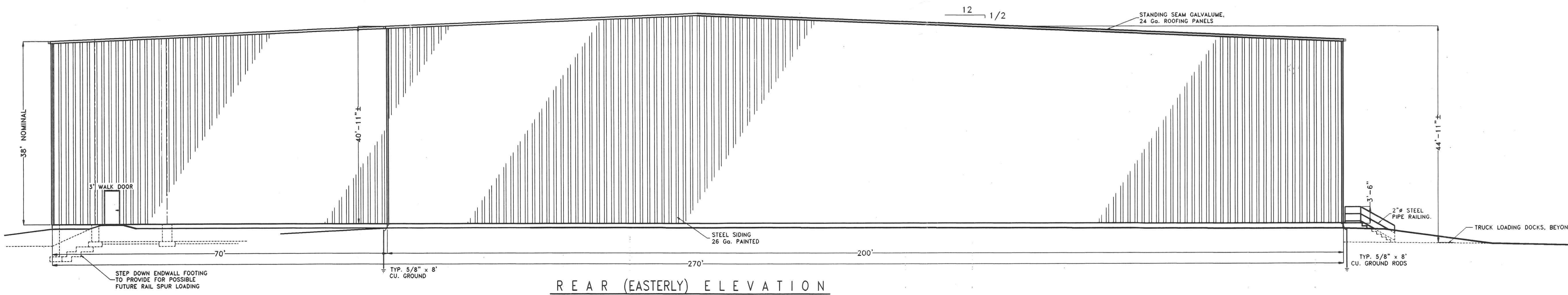
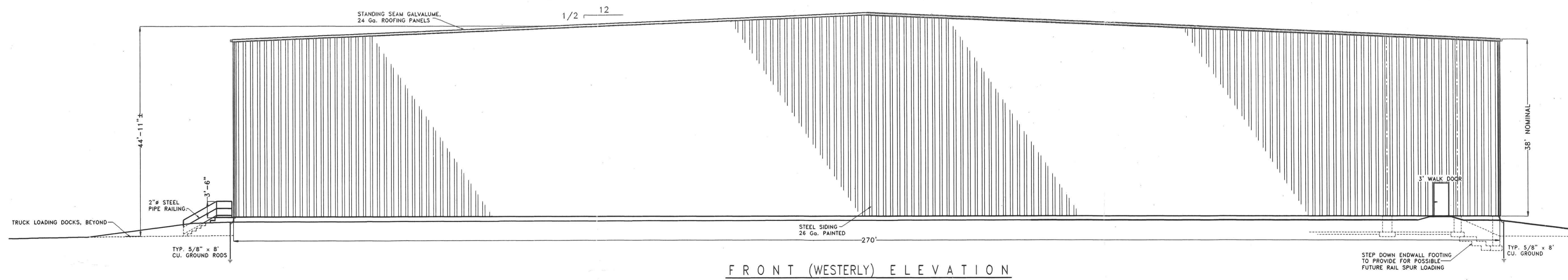
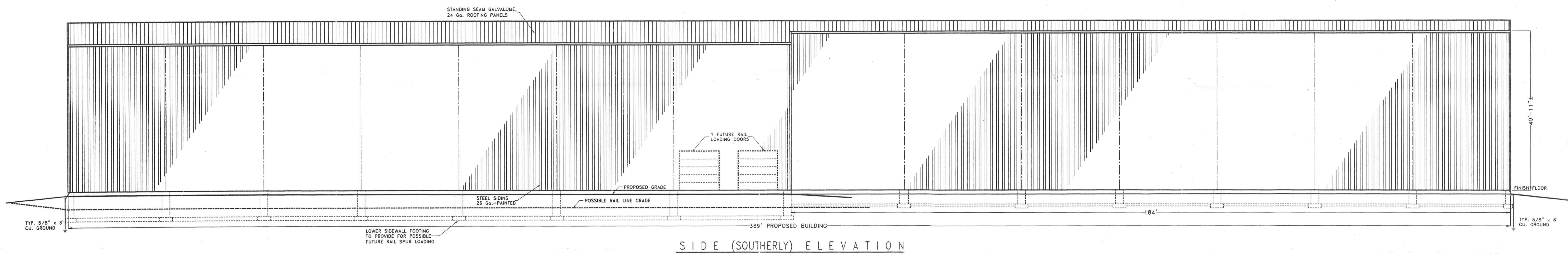
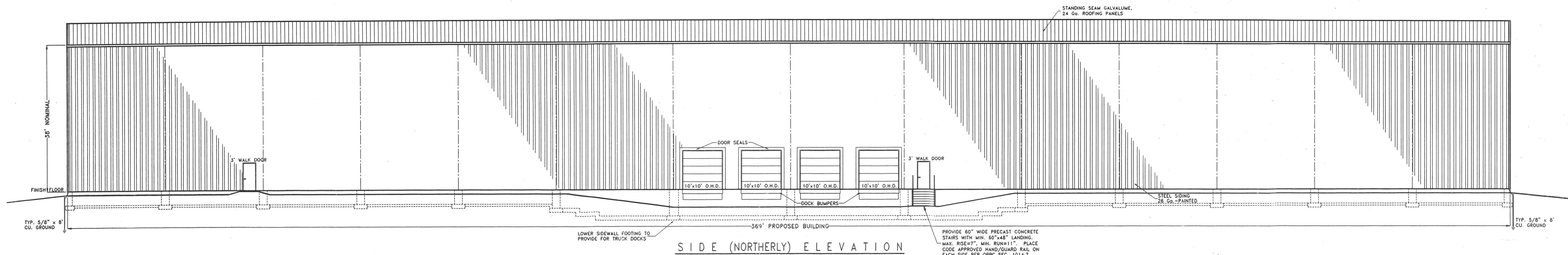
**LEGEND OF UTILITIES**

EXISTING	PROPOSED
3"-4" TREE	3"-4" TREE (relocated)
8" SANITARY SEWER @ 0.4%	8" SANITARY SEWER @ 0.4%
8" WATERLINE	8" WATERLINE
GAS LINE	GAS LINE
18" STORM SEWER @ 0.17%	18" STORM SEWER @ 0.17%
U.G. ELECTRIC	U.G. ELECTRIC
POINT ELEVATION AND CONTOUR LINE (ADD 600 TO ALL POINT ELEVATIONS)	PROPOSED POINT ELEVATION AND CONTOUR LINES

**CLOVERLEAF STORAGE, INC.**  
 1800 INDUSTRIAL DRIVE NAPOLEON, OHIO

DIRECTORY: C:\ND\CLOVERLEAF	FILE NAME: \SITE2000	REVISED:
DRAWN BY: R.D.S. ~ dba: NEW DIMENSIONS	SCALE: NOTED	DATE: MAY, 2000
SITE PLAN, LOCATION MAP & BUILDING DATA	DRAWING NUMBER:	2 of X

INNOVATIVE TOOL & DIE, INC.



INDEX OF SHEETS

- 1 - EXTERIOR ELEVATIONS & INDEX OF DRAWINGS
- 2 - SITE PLAN, LOCATION MAP & BUILDING DATA
- 3 - FLOOR/FOUNDATION PLAN & GENERAL NOTES
- 4 - FOUNDATION DETAILS & SECTIONS

ATTACHMENT - MANUFACTURED STEEL BUILDING SPECIFICATIONS & DRAWINGS

<b>CLOVERLEAF STORAGE, INC.</b>		
1800 INDUSTRIAL DRIVE	419-599-5015	NAPOLÉON, OHIO
DIRECTORY: C:\ND\CLOVERLEAF	FILE NAME: \FLRELEV2000	REVISED:
DRAWN BY: R.D.S. ~ dba: NEW DIMENSIONS		SCALE: 1"=12'-0"
EXTERIOR ELEVATIONS & INDEX OF DRAWINGS		DATE: MAY, 2000
		DRAWING NUMBER: 1 of X

